



SEASIDE

HOUSE

A project from





For every taste,
SEASIDE

THE BRAND THAT
HAS BUILT PANAMA
SINCE 1978





EXPERIENCE AND BACKING FROM EMPRESAS BERN

#1 Main developer and construction company in Panama

+45 years of experience

+8,000 keys delivered

+160 projects delivered

60% foreign and expatriate clients

+2,000 Bern Hotels and Resorts hotel rooms

+35 years in the hospitality and tourism industry

+25 years of experience managing real estate units



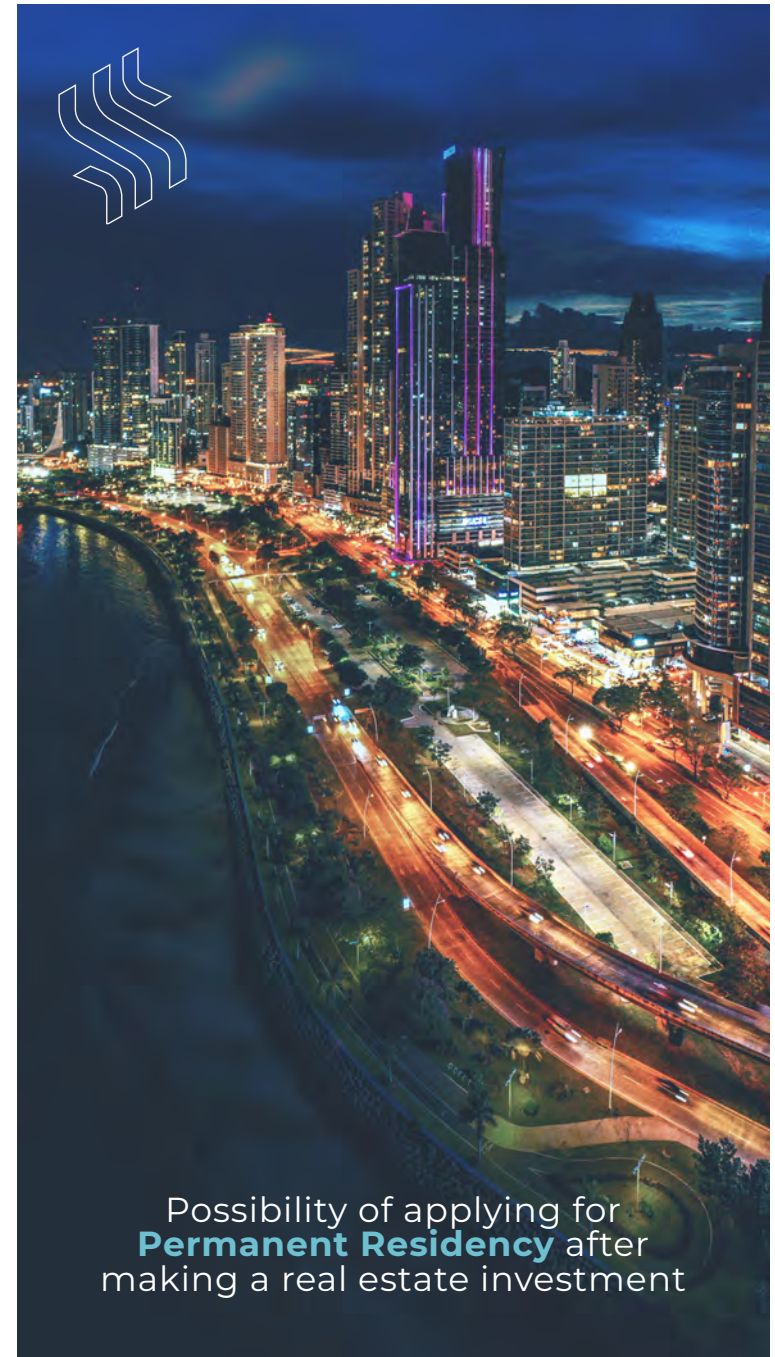
PANAMA, ONE OF THE BEST PLACES TO LIVE IN

Life quality is very high among expats living in Panama, in 2024, 82% qualified it as the best place to live in, going higher over the the global average of 68%.

WHY INVEST IN PANAMA?

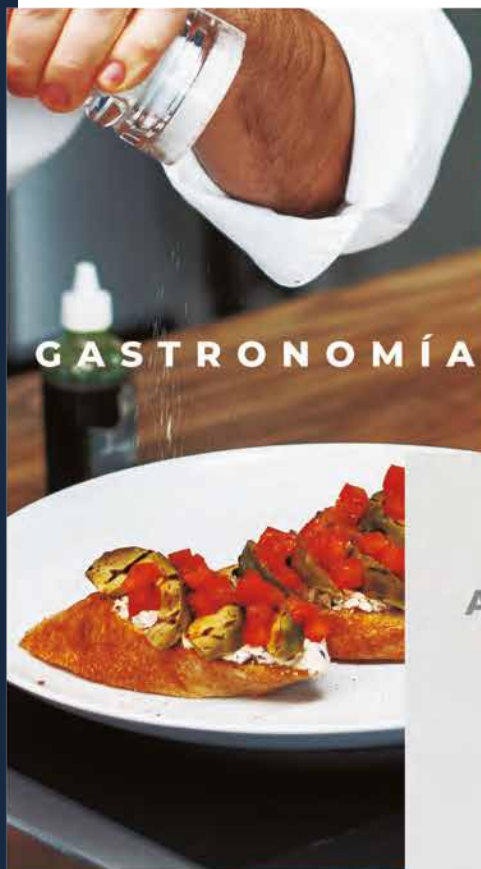
It's a beautiful, multicultural country, with a nice climate; besides, Panama has one of the most stable economies of Latin America and it's considered one of the powers of the region.

- **Quality of Life:** Panama has positioned itself as a privileged destiny to live, thanks to its tropical climate and cultural diversity; besides, satisfaction index amongst expats are very high, they value housing accesibility and quality services.
- **Economic growth:** Panama, has consolidated itself as a financial and logistical hub of first degree in the region. Its economic growth is given to commerce and services, with the Panama Canal the main drive behind these activities.
- **Dollarized economy:** Panama's dollarization has been a fundamental pillar for its economic development, since it has encouraged investment from overseas, promoted stability and protected assets from the volatility of local currencies.
- **Stable politics:** Panama has democratic solidity and an stable political system, which inspires trust amongst investors, specially in the real estate market.
- **Growing tourism:** The mix between its privileged location and the big surge in tourism is making the demand for real estate to grow exponentially.



Possibility of applying for
Permanent Residency after
making a real estate investment

URBANA

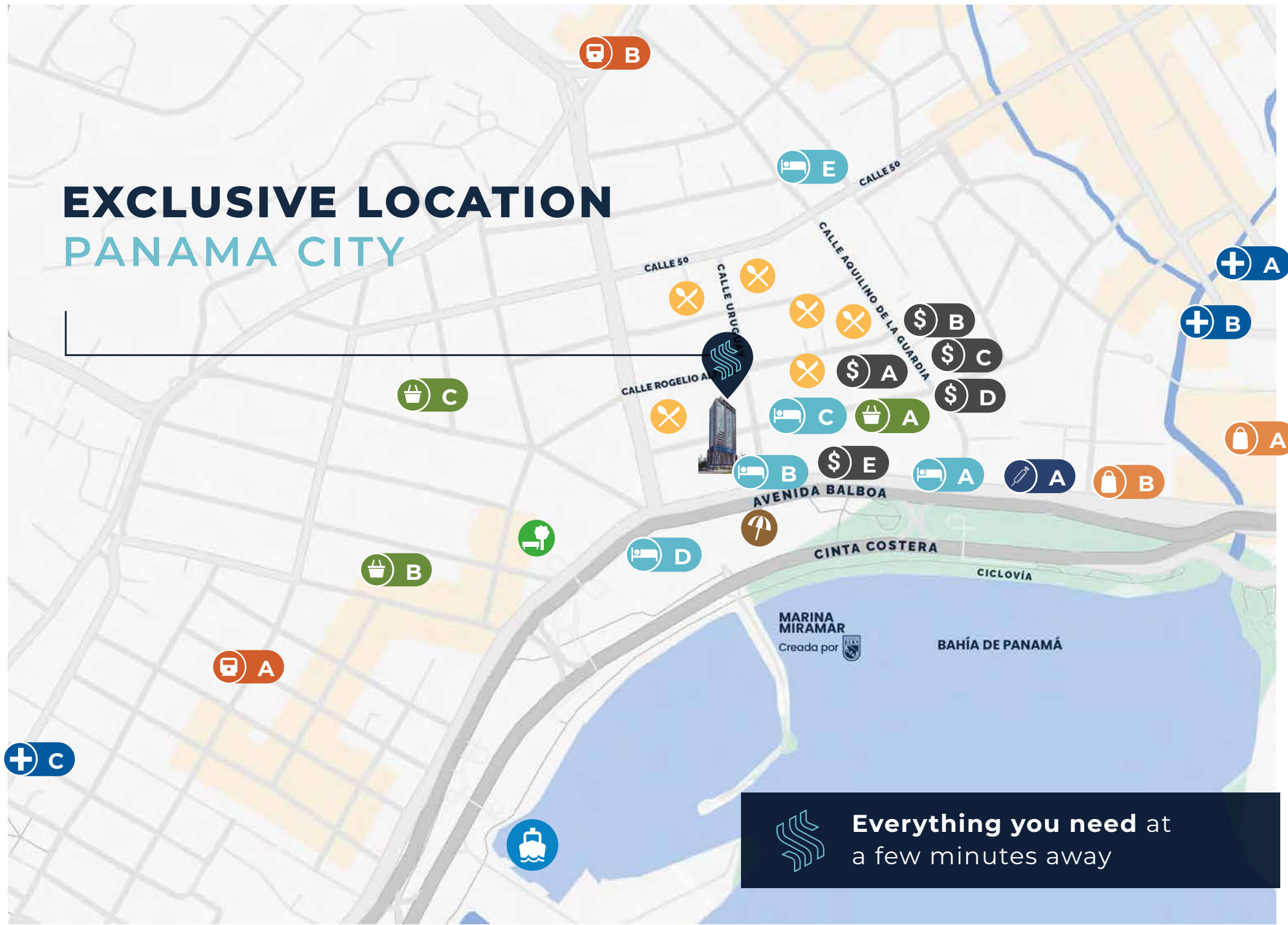


Urbana has as a goal for Calle Uruguay to be recognized at a global level as a location where cultural, recreational, musical, artistic, gastronomic and athletic activities merge and develop to create social and family activities.

This neighborhood has been rennovated by the Panama Mayor's Office, preparing it to be **the most important HUB of art and culture in the city**, contributing to the competitiveness and growth of the community. This turns it in **the perfect location for Seaside House**, where you'll be a mere footsteps of everything you need.

EXCLUSIVE LOCATION

PANAMA CITY



Everything you need at
a few minutes away



HOSPITALS

- A. Paitilla Hospital
 - 17 minutes
 - 7 minutes
- B. Royal Center medical offices
 - 14 minutes
 - 6 minutes
- C. National Hospital
 - 19 minutes
 - 5 minutes
- D. Panama Clinic
 - 27 minutes
 - 9 minutes
- E. Pacífica Salud
 - 32 minutes
 - 9 minutes



SPECIALIZED CLINICS

- A. Stem Cell Institute
 - 7 minutes
 - 3 minutes
- B. Cryo-Cell
 - 9 minutes
 - 38 minutes



SUPERMARKETS

- A. Foodie Market
 - 4 minutes
 - 2 minutes
- B. Rey supermarket
 - 12 minutes
 - 7 minutes
- C. Riba Smith
 - 10 minutes
 - 5 minutes



PARKS

- Urracá Park
 - 7 minutes
 - 3 minutes



HOTELS

- A. Hilton
 - 8 minutes
 - 3 minutes

B. Le Meridien

- 2 minutes
- 4 minutes



C. Waldorf Astoria

- 3 minutes
- 3 minutes

D. Intercontinental

- 5 minutes
- 5 minutes



E. W Panamá

- 5 minutes
- 2 minutes



METRO

- A. Santo Tomás Station
 - 17 minutes
- B. Iglesia del Carmen Station
 - 13 minutes



YACHT CLUB

- Yacht and Fishing Club
 - 19 minutes
 - 6 minutes



CINTA COSTERA

- 5 minutes
- 7 minutes



SHOPPING MALLS

- A. Megápolis Outlet
 - 24 minutes
 - 8 minutes

B. Balboa Boutiques

- 10 minutes
- 5 minutes

Multiplaza

- 30 minutes
- 8 minutes

Soho City Center

- 15 minutes
- 5 minutes



BARS AND RESTAURANTS

(all of them on the same street or at the sides, about a minute away)

- La Malagueña
- La Milonga
- Gaucho's
- Market
- The Fish Market
- Cervecería Legítima
- Brutal Smokehouse
- Mangle
- Al Basha
- Friday's
- Crepes&Waffles



BANKS

- A. Banesco
- B. Scotiabank
- C. Banistmo
- D. BAC Credomatic
- E. Davivienda

Keyplan

Le Meridien Hotel

A 689 sf2



H 689 sf2

G 603 sf2



B 689 sf2

C 689 sf2

D 689 sf2

E 689 sf2

F 603 sf2

Calle 47



603 sf² Unit

- Main bedroom
- Walk-in closet
- Living/Dining room
- Main bathroom
- Kitchen
- Laundry room
- 1 parking space



689 ft² Unit

- Main bedroom
- Walk-in closet
- Living/Dining room
- Main bathroom
- Secondary bathroom
- Kitchen
- Laundry room
- 1 parking space



Impeccable space distribution

We designed each of Seaside's units with the goal of take the most advantage of every space.



*The following pictures represent an artistic interpretation of the project, the final version might have changes.





More than **19375 sf²**
for relaxing!

Discover incredible social
areas distributed between
three different levels. **There
will always be something
for you to do and enjoy
Seaside House!**





SEA SIDE



SEASIDE
HOUSE

Enjoy life your
own way,
live Seaside

Level 2800

- Skyline terrace
- Pet park
- Rock climbing
- Zen garden



Level 2700

- Grilling pavilion
- Fitness center
- Pilates & yoga studio
- Squash court
- Cinema
- Game room



Level 2600

- Swimming pool
- Solarium
- Jacuzzi
- Pool deck
- Fire feature
- Social Hub
- Coworking lounge
- Private lounges
- Club House





**This project has created
an unique concept.**

Urban Club House

Which allows you to
completely enjoy your
lifestyle within the building
and its neighboring areas,
that way you will find the
perfect plan for you at any
moment.

*The following pictures represent an artistic interpretation of the project, the final version might have changes.



@seasidepanama @empresasbern
www.empresasbern.com



Casa Matriz, Ave. Balboa, Bayfront Tower, PB



(507) 269-0645



Plaza del Este



(507) 214-2376

